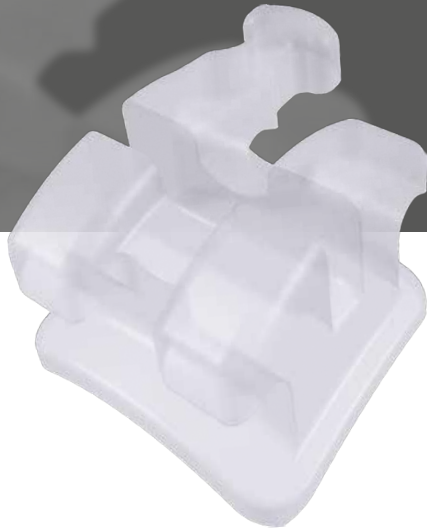


# Aesthetic brackets.

For an even more beautiful smile.



DENTAURUM  
**ONLINE  
SHOP**  
[shop.dentaurum.com](http://shop.dentaurum.com)





Rediscover aesthetics.

### **The highest quality standards.**

Brackets in the wide Dentaureum range, whether metal or ceramic, are manufactured in state-of-the-art design and production procedures on site at Ispringen, Germany. All these processes have been optimized and perfectly coordinated over the years. A very high level of precision is essential to ensure safe, reliable use in orthodontic treatment. With innovative production technologies, such as the CIM process (Ceramic Injection Molding), the most diverse ceramic products can be manufactured using injection molding. Dentaureum seeks to continually develop the aesthetic materials to enable us to react optimally to the increased demand in the ceramic bracket sector.



## discovery® pearl

Fascinatingly natural.



### FDI System

	18	17	16	15	14	13	12	11		21	22	23	24	25	26	27	28
	8	7	6	5	4	3	2	1		1	2	3	4	5	6	7	8
R	8	7	6	5	4	3	2	1		1	2	3	4	5	6	7	8
	48	47	46	45	44	43	42	41		31	32	33	34	35	36	37	38



fascinatingly natural.



### **Maximum quality and performance naturally without compromise.**

discovery® pearl transcends all the previous boundaries of aesthetics, quality and performance. When it is bonded to the tooth, discovery® pearl adapts perfectly to the natural environment of the tooth due to its shade and high degree of translucency.

The bracket is made completely from ceramic without any bothersome metal inserts in the slot. It was designed in one piece and is manufactured in state-of-the-art production facilities using the CIM process (Ceramic Injection Molding).

The base of the bracket is optimally adapted to the contour of the tooth using CAD (Computer Aided Design), which allows it to be easily positioned on the tooth. A clear system consisting of colored positioning guides and FDI notation on the base facilitates tooth-specific assignment of each bracket. The positioning guides also help the operator align and place the bracket very easily.

The innovative laser-structured base ensures a strong bond, enables safe and reliable debonding and guarantees that discovery® pearl will produce optimal treatment outcomes and meet the ever increasing demands for aesthetic tooth correction.



## Reliable product characteristics:

### Proven bracket geometry of the discovery® family

ensures easy combination between discovery® metal and ceramic brackets.

### Perfect shade adaptation

to the natural environment of the tooth – as if the bracket were not there.

### Colored positioning guides

facilitate positioning on the tooth.

### Optimal size

compact in design for optimal treatment & patient comfort.

### Anatomical base

for a perfect fit on the tooth.

### Laser-structured base with FDI notation

for optimal bonding and debonding characteristics.

Now also available as 1 case assortment without positioning guide.



# Aesthetic brackets

## discovery® pearl ceramic brackets / Assortments



### Roth 18/22

Cuspid brackets with hook

Tooth	with positioning guide		without positioning guide		Quantity
	REF (18)	REF (22)	REF (18)	REF (22)	
13-11 / 21-23	718-701-03	722-701-03	718-701-73	722-701-73	6 pieces (1 bracket each)
15-11 / 21-25	718-701-05	722-701-05	718-701-75	722-701-75	10 pieces (1 bracket each)

Tooth	with positioning guide		without positioning guide		Quantity
	REF (18)	REF (22)	REF (18)	REF (22)	
13-11 / 21-23 / 43-41 / 31-33	718-701-63	722-701-63	718-701-83	722-701-83	12 pieces (1 bracket each)
15-11 / 21-25 / 45-41 / 31-35	718-701-65	722-701-65	718-701-85	722-701-85	20 pieces (1 bracket each)

Slot 18: 0.46 mm x 0.76 mm / 18 x 30  
Slot 22: 0.56 mm x 0.76 mm / 22 x 30



### Roth 18/22

Cuspid, 1st bicuspid and 2nd bicuspid brackets with hook

Tooth	with positioning guide		without positioning guide		Quantity
	REF (18)	REF (22)	REF (18)	REF (22)	
15-11 / 21-25	718-741-60	722-741-60	718-741-80	722-741-80	10 pieces (1 bracket each)

Tooth	with positioning guide		without positioning guide		Quantity
	REF (18)	REF (22)	REF (18)	REF (22)	
15-11 / 21-25 / 45-41 / 31-35	718-741-65	722-741-65	718-741-85	722-741-85	20 pieces (1 bracket each)

Slot 18: 0.46 mm x 0.76 mm / 18 x 30  
Slot 22: 0.56 mm x 0.76 mm / 22 x 30

## discovery® pearl ceramic brackets / Assortments

### McLaughlin-Bennett-Trevisi\*\* 18/22

Cuspid brackets with hook

Tooth	with positioning guide		without positioning guide		Quantity
	REF (18)	REF (22)	REF (18)	REF (22)	
13-11 / 21-23	718-702-03	722-702-03	718-702-73	722-702-73	6 pieces (1 bracket each)
15-11 / 21-25	718-702-05	722-702-05	718-702-75	722-702-75	10 pieces (1 bracket each)

Tooth	with positioning guide		without positioning guide		Quantity
	REF (18)	REF (22)	REF (18)	REF (22)	
13-11 / 21-23 / 43-41 / 31-33	718-702-63	722-702-63	718-702-83	722-702-83	12 pieces (1 bracket each)
15-11 / 21-25 / 45-41 / 31-35	718-702-65	722-702-65	718-702-85	722-702-85	20 pieces (1 bracket each)

Slot 18: 0.46 mm x 0.76 mm / 18 x 30

Slot 22: 0.56 mm x 0.76 mm / 22 x 30

\*\* The Dentaaurum version of this prescription is not claimed to be a duplication of any other, nor does Dentaaurum imply that it is endorsed in any way by Drs. McLaughlin, Bennett and Trevisi.



### McLaughlin-Bennett-Trevisi\*\* 18/22

Cuspid, 1st bicuspid and 2nd bicuspid brackets with hook

Tooth	with positioning guide		without positioning guide		Quantity
	REF (18)	REF (22)	REF (18)	REF (22)	
15-11 / 21-25	718-742-60	722-742-60	718-742-80	722-742-80	10 pieces (1 bracket each)

Tooth	with positioning guide		without positioning guide		Quantity
	REF (18)	REF (22)	REF (18)	REF (22)	
15-11 / 21-25 / 45-41 / 31-35	718-742-65	722-742-65	718-742-85	722-742-85	20 pieces (1 bracket each)

Slot 18: 0.46 mm x 0.76 mm / 18 x 30

Slot 22: 0.56 mm x 0.76 mm / 22 x 30

\*\* The Dentaaurum version of this prescription is not claimed to be a duplication of any other, nor does Dentaaurum imply that it is endorsed in any way by Drs. McLaughlin, Bennett and Trevisi.



# Aesthetic brackets

## discovery® pearl ceramic brackets / Single packs



### Roth 18/22

with positioning guide

Tooth	Torque	Angulation	In/Out	Hook	Width	REF (18)	REF (22)	Quantity
11	+ 12°	+ 5°	0.7 mm		3.1 mm	718-701-11	722-701-11	1 piece
21	+ 12°	+ 5°	0.7 mm		3.1 mm	718-701-21	722-701-21	1 piece
12	+ 8°	+ 9°	1.3 mm		2.7 mm	718-701-12	722-701-12	1 piece
22	+ 8°	+ 9°	1.3 mm		2.7 mm	718-701-22	722-701-22	1 piece
13	- 2°	+ 13°	0.7 mm	•	3.1 mm	718-741-13	722-741-13	1 piece
23	- 2°	+ 13°	0.7 mm	•	3.1 mm	718-741-23	722-741-23	1 piece
14	- 7°	0°	0.7 mm		3.1 mm	718-701-14	722-701-14	1 piece
24	- 7°	0°	0.7 mm		3.1 mm	718-701-24	722-701-24	1 piece
14	- 7°	0°	0.7 mm	•	3.1 mm	718-741-14	722-741-14	1 piece
24	- 7°	0°	0.7 mm	•	3.1 mm	718-741-24	722-741-24	1 piece
15	- 7°	0°	0.7 mm		3.1 mm	718-701-15	722-701-15	1 piece
25	- 7°	0°	0.7 mm		3.1 mm	718-701-25	722-701-25	1 piece
15	- 7°	0°	0.7 mm	•	3.1 mm	718-741-15	722-741-15	1 piece
25	- 7°	0°	0.7 mm	•	3.1 mm	718-741-25	722-741-25	1 piece



Tooth	Torque	Angulation	In/Out	Hook	Width	REF (18)	REF (22)	Quantity
41	- 1°	0°	1.3 mm		2.7 mm	718-701-41	722-701-41	1 piece
31	- 1°	0°	1.3 mm		2.7 mm	718-701-31	722-701-31	1 piece
42	- 1°	0°	1.3 mm		2.7 mm	718-701-42	722-701-42	1 piece
32	- 1°	0°	1.3 mm		2.7 mm	718-701-32	722-701-32	1 piece
43	- 11°	+ 7°	0.7 mm	•	3.1 mm	718-741-43	722-741-43	1 piece
33	- 11°	+ 7°	0.7 mm	•	3.1 mm	718-741-33	722-741-33	1 piece
44	- 17°	0°	0.7 mm		3.1 mm	718-701-44	722-701-44	1 piece
34	- 17°	0°	0.7 mm		3.1 mm	718-701-34	722-701-34	1 piece
44	- 17°	0°	0.7 mm	•	3.1 mm	718-741-44	722-741-44	1 piece
34	- 17°	0°	0.7 mm	•	3.1 mm	718-741-34	722-741-34	1 piece
45	- 22°	0°	0.7 mm		3.1 mm	718-701-45	722-701-45	1 piece
35	- 22°	0°	0.7 mm		3.1 mm	718-701-35	722-701-35	1 piece
45	- 22°	0°	0.7 mm	•	3.1 mm	718-741-45	722-741-45	1 piece
35	- 22°	0°	0.7 mm	•	3.1 mm	718-741-35	722-741-35	1 piece

Slot 18: 0.46 mm x 0.76 mm / 18 x 30  
Slot 22: 0.56 mm x 0.76 mm / 22 x 30



### McLaughlin-Bennett-Trevisi\*\* 18/22

with positioning guide



Tooth	Torque	Angulation	In/Out	Hook	Width	REF (18)	REF (22)	Quantity
11	+ 17°	+ 4°	0.7 mm		3.1 mm	718-702-11	722-702-11	1 piece
21	+ 17°	+ 4°	0.7 mm		3.1 mm	718-702-21	722-702-21	1 piece
12	+ 10°	+ 8°	1.3 mm		2.7 mm	718-702-12	722-702-12	1 piece
22	+ 10°	+ 8°	1.3 mm		2.7 mm	718-702-22	722-702-22	1 piece
13	0°	+ 8°	0.7 mm	•	3.1 mm	718-742-13	722-742-13	1 piece
23	0°	+ 8°	0.7 mm	•	3.1 mm	718-742-23	722-742-23	1 piece
14	- 7°	0°	0.7 mm		3.1 mm	718-702-14	722-702-14	1 piece
24	- 7°	0°	0.7 mm		3.1 mm	718-702-24	722-702-24	1 piece
14	- 7°	0°	0.7 mm	•	3.1 mm	718-742-14	722-742-14	1 piece
24	- 7°	0°	0.7 mm	•	3.1 mm	718-742-24	722-742-24	1 piece
15	- 7°	0°	1.2 mm		3.1 mm	718-702-15	722-702-15	1 piece
25	- 7°	0°	1.2 mm		3.1 mm	718-702-25	722-702-25	1 piece
15	- 7°	0°	1.2 mm	•	3.1 mm	718-742-15	722-742-15	1 piece
25	- 7°	0°	1.2 mm	•	3.1 mm	718-742-25	722-742-25	1 piece



Tooth	Torque	Angulation	In/Out	Hook	Width	REF (18)	REF (22)	Quantity
41	- 6°	0°	1.3 mm		2.7 mm	718-702-41	722-702-41	1 piece
31	- 6°	0°	1.3 mm		2.7 mm	718-702-31	722-702-31	1 piece
42	- 6°	0°	1.3 mm		2.7 mm	718-702-42	722-702-42	1 piece
32	- 6°	0°	1.3 mm		2.7 mm	718-702-32	722-702-32	1 piece
43	0°	+ 3°	0.7 mm	•	3.1 mm	718-742-43	722-742-43	1 piece
33	0°	+ 3°	0.7 mm	•	3.1 mm	718-742-33	722-742-33	1 piece
44	- 12°	+ 2°	0.7 mm		3.1 mm	718-702-44	722-702-44	1 piece
34	- 12°	+ 2°	0.7 mm		3.1 mm	718-702-34	722-702-34	1 piece
44	- 12°	+ 2°	0.7 mm	•	3.1 mm	718-742-44	722-742-44	1 piece
34	- 12°	+ 2°	0.7 mm	•	3.1 mm	718-742-34	722-742-34	1 piece
45	- 17°	+ 2°	0.7 mm		3.1 mm	718-702-45	722-702-45	1 piece
35	- 17°	+ 2°	0.7 mm		3.1 mm	718-702-35	722-702-35	1 piece
45	- 17°	+ 2°	0.7 mm	•	3.1 mm	718-742-45	722-742-45	1 piece
35	- 17°	+ 2°	0.7 mm	•	3.1 mm	718-742-35	722-742-35	1 piece

Slot 18: 0.46 mm x 0.76 mm / 18 x 30

Slot 22: 0.56 mm x 0.76 mm / 22 x 30

\*\* The Dentaurum version of this prescription is not claimed to be a duplication of any other, nor does Dentaurum imply that it is endorsed in any way by Drs. McLaughlin, Bennett and Trevisi.

# Aesthetic brackets

## discovery® pearl & smart combined assortments



### Roth 22

Cuspid brackets with hook · with positioning guide

Brackets	Tooth	REF (22)	Quantity
discovery® pearl	15-11 / 21-25	891-404-00	20 pieces (1 bracket each)
discovery® smart	45-41 / 31-35		

Slot 22: 0.56 mm x 0.76 mm / 22 x 30



### McLaughlin-Bennett-Trevisi\*\* 22

Cuspid brackets with hook · with positioning guide

Brackets	Tooth	REF (22)	Quantity
discovery® pearl	15-11 / 21-25	891-400-00	20 pieces (1 bracket each)
discovery® smart	45-41 / 31-35		

Slot 22: 0.56 mm x 0.76 mm / 22 x 30

\*\* The Dentaaurum version of this prescription is not claimed to be a duplication of any other, nor does Dentaaurum imply that it is endorsed in any way by Drs. McLaughlin, Bennett and Trevisi.

## discovery® pearl ceramic brackets / Accessories

### discovery® pearl debonding instrument sterilizable

For easy and safe removal of **discovery® pearl ceramic brackets**.

REF 019-001-00

1 piece



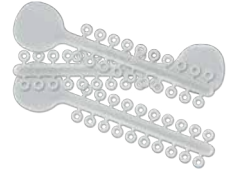
### Dentalastics® pearl

#### Plastic ligatures

Especially delicate plastic ligatures, instead of wire ligatures, for ligating archwires in brackets.

**Contents:** 50 sticks x 20 rings = 1000 pieces

Color	Inner ø	REF	Quantity
pearl	1.3 mm	<b>774-563-01</b>	1 pack



### SUPER Elasto-Force plastic chains

Consistent traction force over a long period of time. High elasticity with excellent elastic recovery.

Color	Inner ø	Length	REF	Quantity
pearl	1.3 mm	4.6 m	<b>774-236-01</b>	1 roll



### Orthodontic demonstration model discovery® pearl

McLaughlin-Bennett-Trevisi\* 22

#### Fitted with:

- discovery® pearl ceramic brackets
- translucent arch pearl
- Dentalastics® pearl plastic ligatures

Maxilla made of plastic.

REF 892-000-18

1 piece

\* The Dentaurum version of this prescription is not claimed to be a duplication of any other, nor does Dentaurum imply that it is endorsed in any way by Drs. McLaughlin, Bennett and Trevisi.



### Orthodontic demonstration model discovery® pearl

Roth 22

#### Fitted with:

- discovery® pearl ceramic brackets, maxilla / mandible 5-5
- Ortho-Cast M-Series buccal tubes, maxilla / mandible 6
- translucent arch pearl, maxilla
- Tensic® arch, mandible
- Dentalastics® pearl plastic ligatures

Maxilla and mandible made of plastic, hinged.

REF 892-000-21

1 piece

