

# ORTHOCAST

M-SERIES



Conversion of Ortho-Cast M-Series buccal tubes using the Ortho-Cast M-Series cap removal pliers.

## **Ortho-Cast M-Series**

A series of buccal tubes in a class of their own.



● **Ortho-Cast M-Series**  
non-convertible



single rectangular  
double rectangular

● **Ortho-Cast M-Series**  
convertible



single rectangular  
double rectangular

● **Ortho-Cast M-Series**  
convertible



double  
combination  
triple  
combination

● **Ortho-Cast M-Series mini**  
non-convertible



single rectangular

## Perfect in function and design.

Just like the Dentaurem brackets, the buccal tubes are manufactured using state-of-the-art design and production techniques.

The Ortho-Cast M-Series buccal tubes offer the user many features for simple and safe handling. The user also has maximum freedom of choice for individual treatment: Ortho-Cast M-Series single or double rectangular, convertible or non-convertible, for the bonding or for the banding technique.

- New: Double and triple combination, convertible, for the banding technique.
- Genuine one-piece buccal tube for high biocompatibility.
- 3D base with laser-structured pad for perfect fit and excellent retention.
- Marking with + (upper jaw) / - (lower jaw) and FDI notation in the bonding technique for easy matching to tooth.
- Pliable ball-end hook for versatility and customization of treatment.



accessories



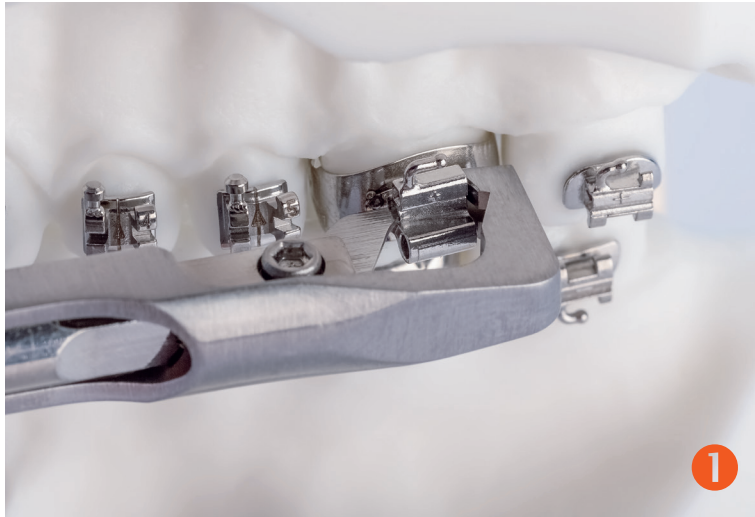
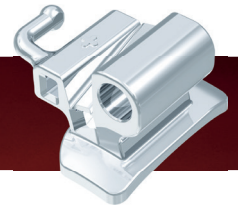
**Optimum conversion**  
using the specially designed cap removal pliers  
(REF 003-805-00).



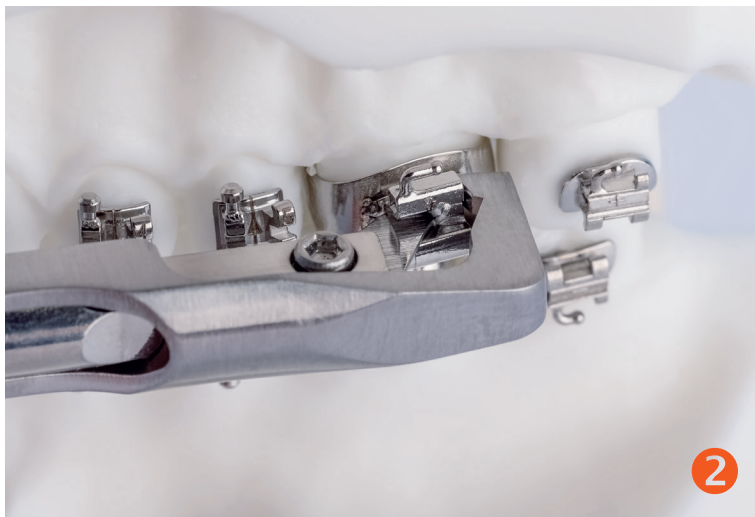
**Simple removal of the conversion cap**  
using the Weingart universal pliers  
(REF 003-120-00)



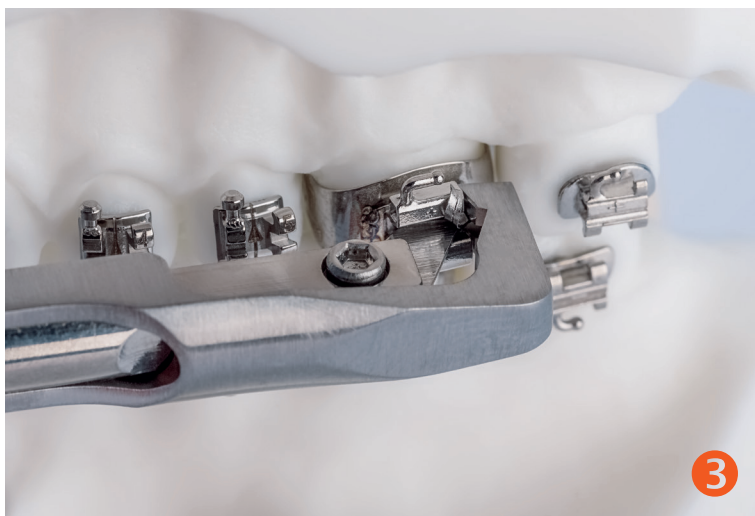
## 1. Conversion of the Ortho-Cast M-Series buccal tubes, for example\* triple combination, maxilla, banding technique.



Position the cap removal pliers with the blade in the slot from mesial, the pliers are open and are resting on the band behind the buccal tube from distal.

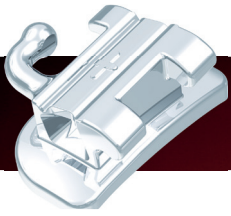


Gently press the pliers together until the cap of the slot is partly removed.



Then press the pliers to close them completely, thereby removing the cap of the slot.

\* All convertible Ortho-Cast M-Series buccal tubes can be converted using the cap removal pliers REF 003-805-00.



## 2. Troubleshooting, example: Ortho-Cast M-Series, single rectangular buccal tube, maxilla, bonding technique.



Cap removal pliers with the blade in the slot from mesial, pliers are open and resting on the base behind the buccal tube from distal.



Pliers gently pressed together until the cap of the slot is partly removed.



Cap removal pliers fully pressed, cap of slot is not completely removed.



The cap of the slot could only be removed from one side of the body.



Use Weingart pliers (REF 003-120-00) for example to grasp the cap which is only partly removed and is sticking slightly out ...



... and remove the cap completely.

# Dentaurum

Germany | Benelux | España | France | Italia | Switzerland | Australia | Canada | USA  
and in more than 130 countries worldwide.



DENTAURUM  
QUALITY  
WORLDWIDE  
UNIQUE

Date of information: 11/19  
Subject to modifications

**D**  
DENTAURUM

Turnstr. 31 | 75228 Ispringen | Germany | Tel. +49 72 31/803-0 | Fax +49 72 31/803-295  
[www.dentaurum.com](http://www.dentaurum.com) | [info@dentaurum.com](mailto:info@dentaurum.com)